

TECHNICAL SPECIFICATION

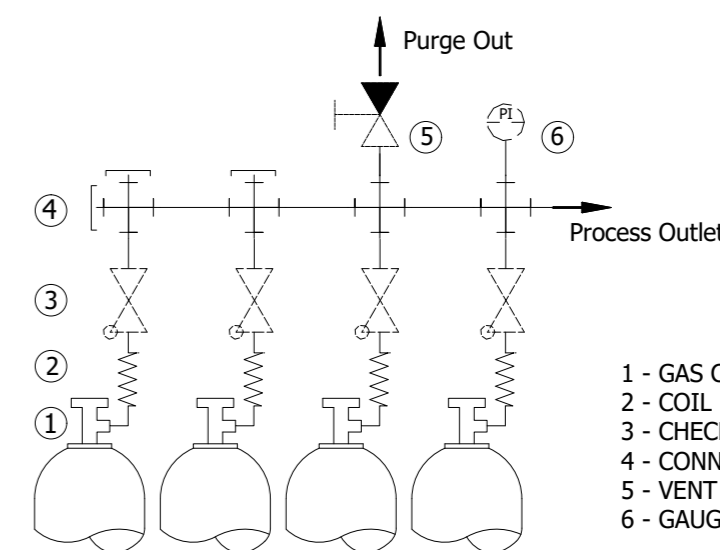
MATERIAL OF GAS WETTED PARTS:
 ADAPTOR BODY: BRASS (CW614N)
 TUBE D1/2": STAINLESS STEEL (1.4404)

INLET PRESSURE: MAX.300 BAR

GAS TYPE
 DEFINED BY PRODUCT LINE AND TYPE
 (CHECK APPROVED GAS TYPE IN DATASHEET)

TEC LINE:
 NON-CORROSIVE GASES
 NON-TOXIC GASES

Overview of possible extension versions left/right side



- 1 - GAS CYLINDER
- 2 - COIL
- 3 - CHECK VALVE
- 4 - CONNECTION PIECE
- 5 - VENT VALVE
- 6 - GAUGE

ORDERING INFORMATION

ETMCP0 CX X X XX XX XXXX XXXX XXXX

PORTING ORIENTATION:
 R - [4 Port] (1 In|3 Out|5 Out|7 Out)
 L - [4 Port] (1 Out|3 Out|5 In|7 Out)

EXTENSION LEVEL:
 1 - 1 INLET
 2 - 2 INLETS
 3 - 3 INLETS
 4 - 4 INLETS

SPECIALS:
 0 - WITHOUT
 C - CHECK VALVE
 V - VENT VALVE
 W - CHECK VALVE + VENT VALVE

WORKING PRESSURE:
 F4 - 60 BAR
 FX - 200 BAR
 GX - 300 BAR

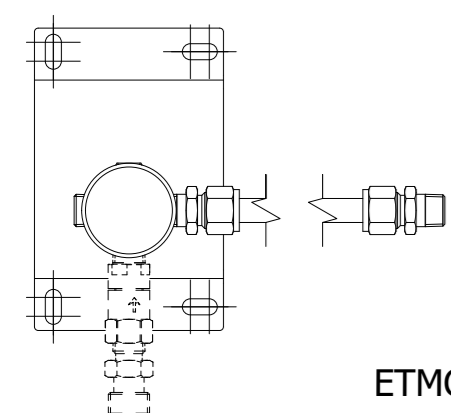
VENT CONNECTION:
 SEE LIST OF CONNECTIONS

PROCESS INLET CONNECTION:
 N38F - NPT3/8" FEMALE
 E2MR - G3/8" MALE EN560 RIGHT
 W2ML - W21.8X1/4" MALE LEFT
 W2MR - W21.8X1/4" MALE RIGHT

LENGTH:
 L030 - 300 MM
 L100 - 1000 MM

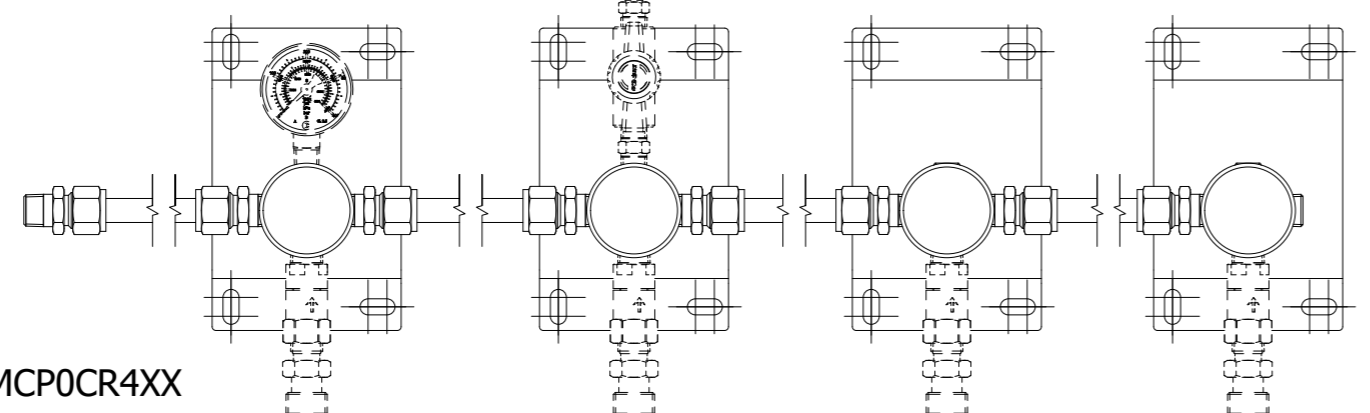
PRESSURE INDICATOR:
 01 - WITHOUT (PLUGGED)
 BT - BOURDON TUBE
 I1 - INDUCTIVE CONTACT I1
 R5 - REED CONTACT R5
 PT - PRESSURE TRANSMITTER
 PX - PRESSURE TRANSMITTER EX

LEFT SIDE - 1 INLET



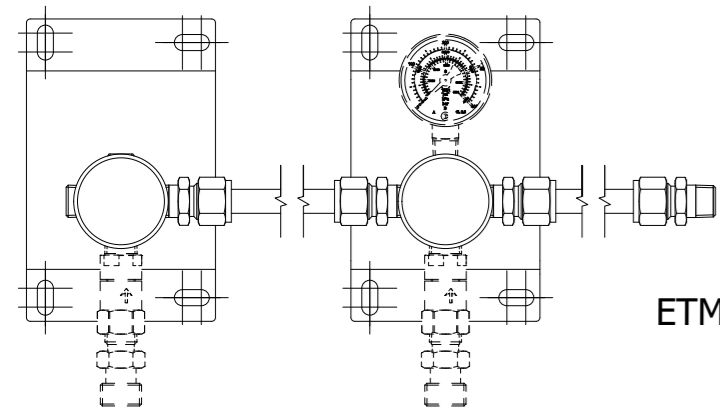
ETMCP0CL1XX

RIGHT SIDE - 4 INLETS



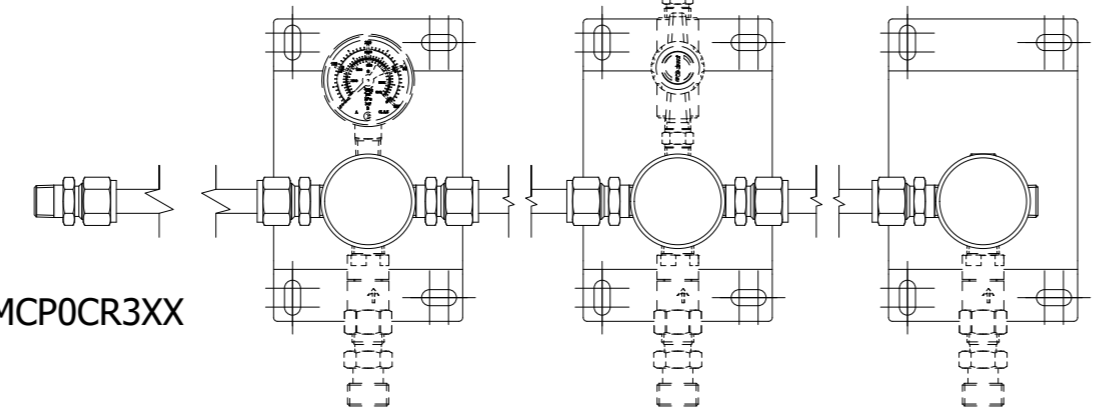
ETMCP0CR4XX

LEFT SIDE - 2 INLETS



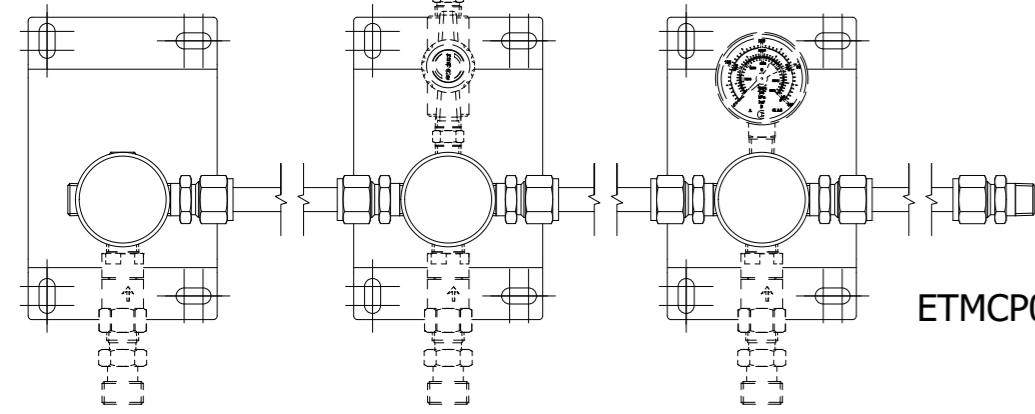
ETMCP0CL2XX

RIGHT SIDE - 3 INLETS



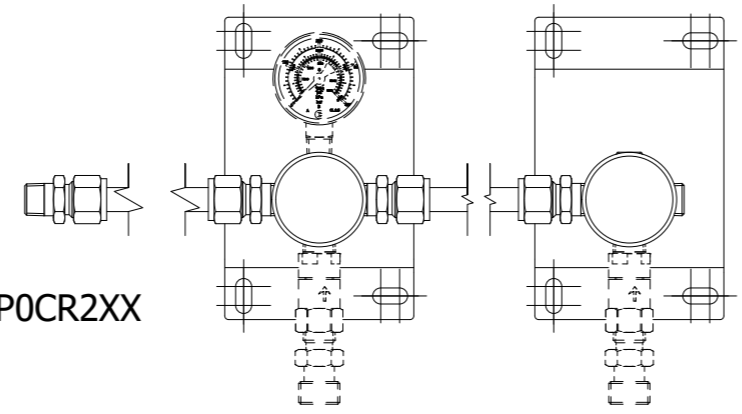
ETMCP0CR3XX

LEFT SIDE - 3 INLETS



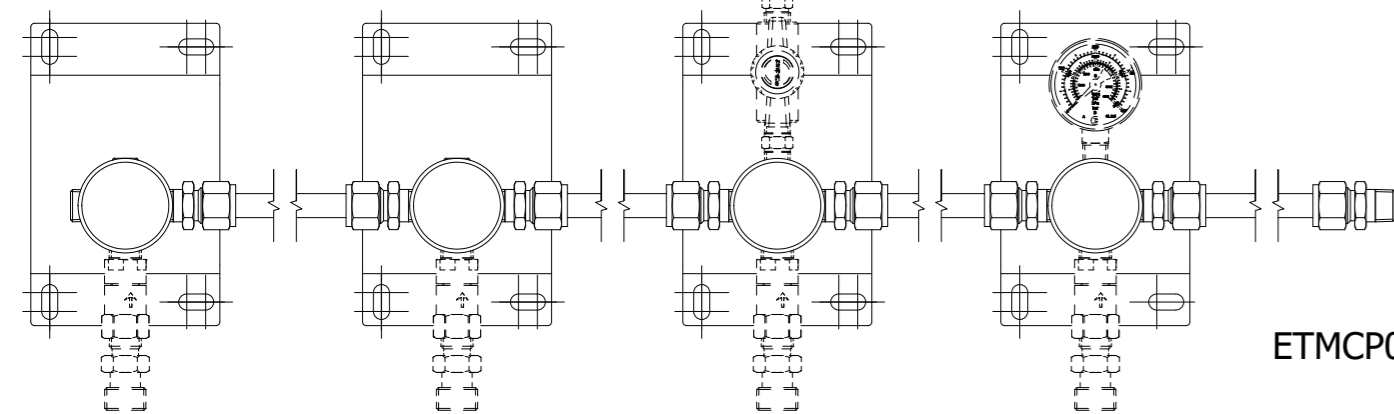
ETMCP0CL3XX

RIGHT SIDE - 2 INLETS



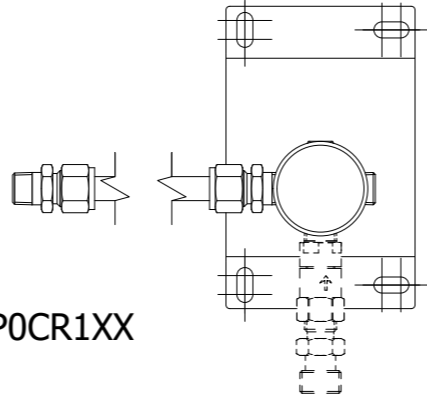
ETMCP0CR2XX

LEFT SIDE - 4 INLETS



ETMCP0CL4XX

RIGHT SIDE - 1 INLET



ETMCP0CR1XX

- LIST OF CONNECTIONS**
- N14F - NPT1/4" FEMALE
 - M06B - COMPRESSION METRIC 6 MM BRASS
 - M08B - COMPRESSION METRIC 8 MM BRASS
 - M10B - COMPRESSION METRIC 10 MM BRASS
 - M12B - COMPRESSION METRIC 12 MM BRASS
 - M06S - COMPRESSION METRIC 6 MM SS
 - M08S - COMPRESSION METRIC 8 MM SS
 - M10S - COMPRESSION METRIC 10 MM SS
 - M12S - COMPRESSION METRIC 12 MM SS
 - IX4B - COMPRESSION IMPERIAL 1/4" BRASS
 - IX6B - COMPRESSION IMPERIAL 3/8" BRASS
 - IX8B - COMPRESSION IMPERIAL 1/2" BRASS
 - IX4S - COMPRESSION IMPERIAL 1/4" SS
 - IX6S - COMPRESSION IMPERIAL 3/8" SS
 - IX8S - COMPRESSION IMPERIAL 1/2" SS

EXAMPLE: ETMCP0CR3VGX01L100N38FN14F

Polotovar Raw material Material	Rozměr polotovaru Dim. of raw material Material	Povrchová úprava Surface finish Starý výkres Old drawing	Hmotnost Weight
Datum vypracování Creation date 20.4.2021	Opracování / Machining Ra	Kritický rozměr značen Critical dimension marked Netoz. rozměry / Dim. without tol. ISO 2768 m,K	List / Počet listů Sheet / Number of sheets 1 / 2
Komentář Notice Vyrobeno / Created Chadim Kontroloval / Inspected Ondraček Lubos Schválil / Approved Ing. Z. Hajek Kvalifikační Item Class B: Standard	Měřítko / Scale 2:5	KR -0,1 -0,3 +0,3 +0,1	EXT TEC 100Q CP 0 4PORTC 1IN 3OUT